

# All Terrain

S E R I E S



# All Terrain



# All Terrain

S E R I E S

#### Main features:

- Mondopoint 11
- The particularly wide and comfortable shape assures robustness
- The overcap protects the footwear from shocks
- Footbed in multi-perforated EVA material, with antishock properties

#### Sole

Midsole: Polyurethane  
Outsole: Polyurethane

#### Recommended for

- Heavy industry
- Construction and road works
- Agriculture, landscaping, forestry
- Environments with uneven terrain

EN ISO 20345:2022

\* Under certification process

***"Take up the challenge.  
Anytime, anywhere"***

*The All-Terrain Series is designed for multiple environments – from construction sites to indoor activities – and to be comfortable and supportive for a variety of activities.*

*The key feature of this series is the all-terrain outer sole made to withstand many surfaces, including rocks, mud, and snow. Thanks to its deep tread pattern it provides excellent traction both in dry and slippery conditions.*

*The shock-absorbing properties of the PU midsole make it suitable for walking or standing on hard and uneven surfaces without feeling stones or terrain roughness, even after long periods of time.*

*The rocker bottom helps propel the foot forward for an always smooth walk.*

*The Protective toe bumper helps extend the lifespan of shoes by protecting the toe from wear and tear.*



Super Bumper for long life upper

Sculpted design  
pattern that adapts  
to uneven ground

Horizontal ridges  
to increase grip on  
inclined surfaces

Notched side cleats  
to maximise traction  
on uneven ground

Horizontal ridges to  
increase flexibility on  
the sole of the foot

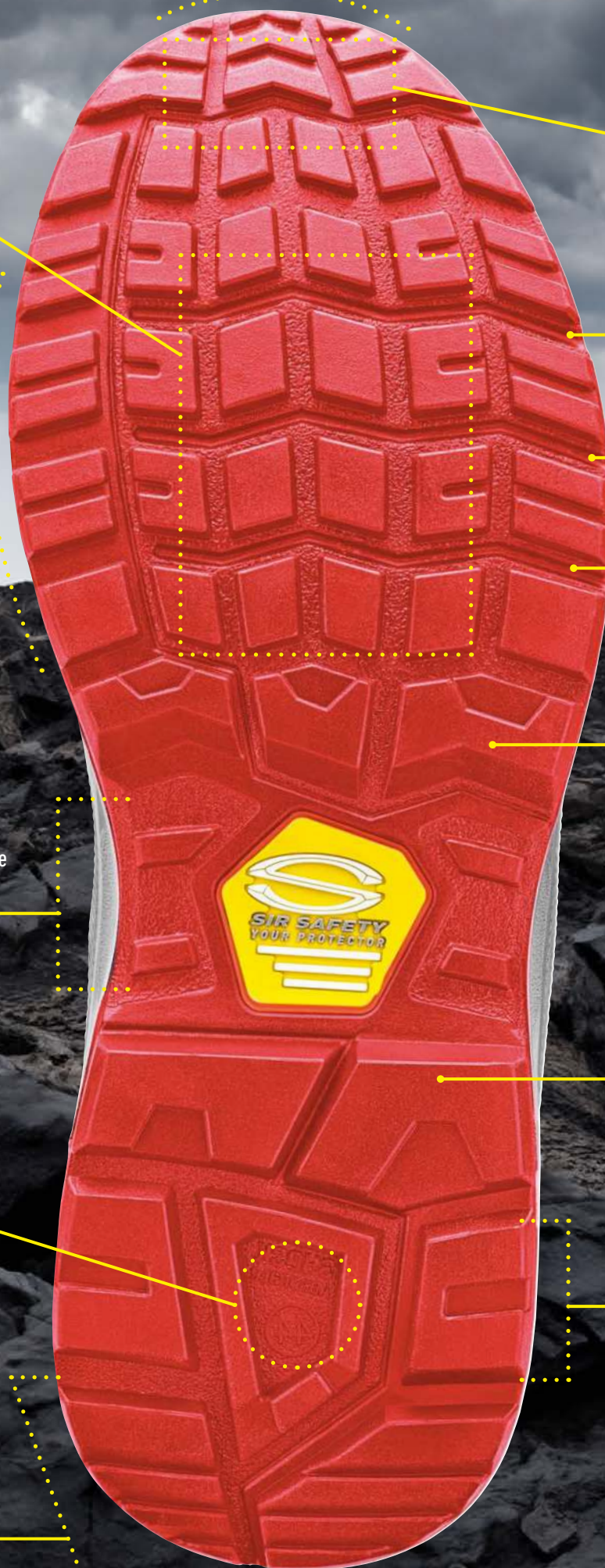
Abrasion resistant waist  
area with cleats to increase  
grip on step ladders

Large cleats for improved  
stability on ladders

Shock Absorber area

Wide cleats to  
stabilise the heel

Heel area designed  
to facilitate walking





# All Terrain

S E R I E S

All-round  
Versatility

S3



## FENICE

**MB1633**

S3 FO LG SR\*

**Toecap:** steel  
**Puncture-proof:** steel  
**Upper:** printed leather  
**Sizes:** 35 - 47

S3



## ANACONDA

**MB1630**

S3 FO LG SR\*

**Toecap:** steel  
**Puncture-proof:** steel  
**Upper:** printed leather  
**Sizes:** 35 - 47





**METAL FREE** S3S

## ANACONDA CPS

### MB1636

S3S FO LG SR\*

**Toecap:** glass fibre  
**Puncture-proof:** composite  
**Upper:** printed leather  
**Sizes:** 35 - 48



S3S

## FENICE CPS

### MB1639

S3S FO LG SR\*

**Toecap:** glass fibre  
**Puncture-proof:** composite  
**Upper:** printed leather  
**Sizes:** 35 - 48



S3S

## WINTER FENICE CPS

### MB1642

S3S FO LG SR\*

**Toecap:** glass fibre  
**Puncture-proof:** composite  
**Upper:** printed leather  
**Sizes:** 35 - 48





**S1P**

**NAOMI**

**MB1651**

S1P FO LG SR\*

**Toecap:** steel  
**Puncture-proof:** steel  
**Upper:** Mesh/suede leather  
**Sizes:** 35 - 47



**S1P**

**MALIBU**

**MB1654**

S1P FO LG SR\*

**Toecap:** steel  
**Puncture-proof:** steel  
**Upper:** suede leather  
**Sizes:** 35 - 47



**METAL  
FREE**

**S1PS**

**MALIBU CPS**

**MB1657**

S1PS FO LG SR\*

**Toecap:** glass fibre  
**Puncture-proof:** composite  
**Upper:** suede leather  
**Sizes:** 35 - 48





**METAL  
FREE**

**S3S**

## OVERPROTECTION

### MB1648

S3S FO LG SR\*

<b>Toecap:</b>	glass fibre
<b>Puncture-proof:</b>	composite
<b>Upper:</b>	printed leather
<b>Sizes:</b>	35 - 48



**S3S**

## METATARSO

### MB1645

S3S M FO LG SR\*

<b>Toecap:</b>	glass fibre
<b>Puncture-proof:</b>	composite
<b>Upper:</b>	printed leather
<b>Sizes:</b>	35 - 48





# WE PRODUCE WHIT PRIDE FOOTWEAR THAT PROTECT YOU

From our Research & Development department we engage resources to create products featuring high levels of performance, but with an increasing attention to design and comfort.

For over forty years, through continuous experimentation, we are dedicated to a noble mission, to protect those on the front line engaged in high-risk working environments.

This will be our contribution to improving the quality of life of the working people and create a better world for them.



**SAFETY SYSTEM**  
**YOUR PROTECTOR**

#### HEADQUARTERS

VIA DEI FORNACIALI, 9  
06081 ASSISI - PERUGIA - ITALY  
T. +39 075 804.37.37  
F. +39 075 804.37.47

#### BRANCH

VIALE EUROPA, 74  
20090 CUSAGO - MILANO - ITALY  
T. +39 02 903.94.575  
F. +39 02 903.94.441

[export@sirsafety.com](mailto:export@sirsafety.com)  
[www.sirsafety.com](http://www.sirsafety.com)



# ALL TIME